

Emission Control & Safety Equipment for Storage Tanks



Storagetech™

General Catalog

Thank You for choosing Storagetech™

Storagetech™, an Aager brand is a specialist designer and manufacturer with extensive experience providing technically advanced emission control & safety equipment for bulk storage tanks, tanker vessels, and road tankers.

“Äager's value proposition has always been to provide the highest quality products, at optimal prices and to deliver them on time.”

Rahmi Oktay Altunergil
C.E.O.

35.000
Square Meter Manufacturing Facility

40
Years of Experience

300+
Employees

5
International Branch Offices with a Main Office Located

at 4
Regions

200+
Diverse Range Products

30+
International Representatives

80+
Countries Supplied Storagetech™ Products

40+
Quality Certificates

35.000
SQUARE METER
MANUFACTURING
SPACE



300+
EMPLOYEES



40
YEARS
OF EXPERIENCE



5 MAIN
OFFICE



200+
DIVERSE RANGE
PRODUCTS



30+
INTERNATIONAL
REPRESENTATIVES



QUALITY
CERTIFICATES



AT 4
REGIONS



Our Mission

Thank You for choosing Storagetech™

Build the best product, cause no unnecessary harm, use business to inspire and implement solutions to the environmental crisis. Some of our customers:

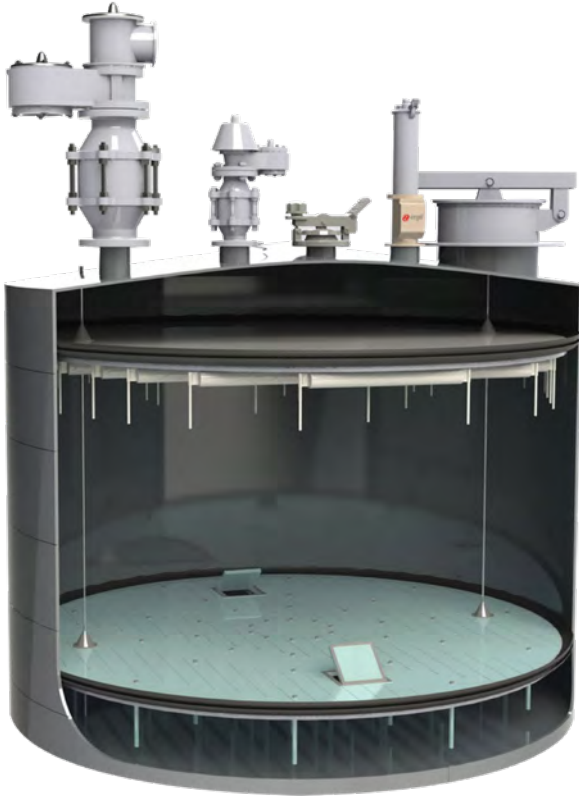


Storagetech™

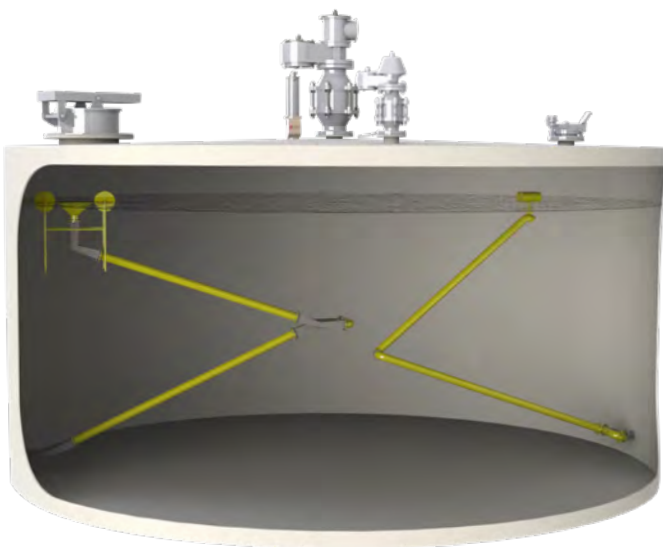
products are designed to safeguard the integrity of storage tanks, to serve for extreme conditions to provide best safety choice for its prestigious users to provide its clients a competitive pricing, outstanding performance and environmental protection.

Atmospheric Bulk Storage Tank Equipment

Emission Control & Safety



- Internal Floating Roofs and Seals
- Flame Arresters
- Pressure Vacuum Vents
- Breather Vents
- Emergency Vents
- Emergency Relief Vents
- Gauge Hatch



- Floating Suction Units
- Roof Drain Systems
- Oil Skimmers
- Swivel & Pivot Joints
- Sight Glass
- Tank Liquid Level Indicator

Flame Arresters

Flame Arrester (Vertical, In Line, Deflagration)

Model 300

Model Number 300 In-Line Deflagration Flame Arrester is a safety device, designed to perform as an extinguishing barrier, which absorbs and dispels heat, reduces fire temperature and the oxygen level to stop the fire through layers of metal ribbons shaped with crimped corrugations. It is mounted either vertically or horizontally between two lines or used with pressure vacuum vent on storage tanks.

They are designed to withstand low to medium deflagrations. It is manufactured from steel or carbon steel, also special materials and coatings are available upon request.



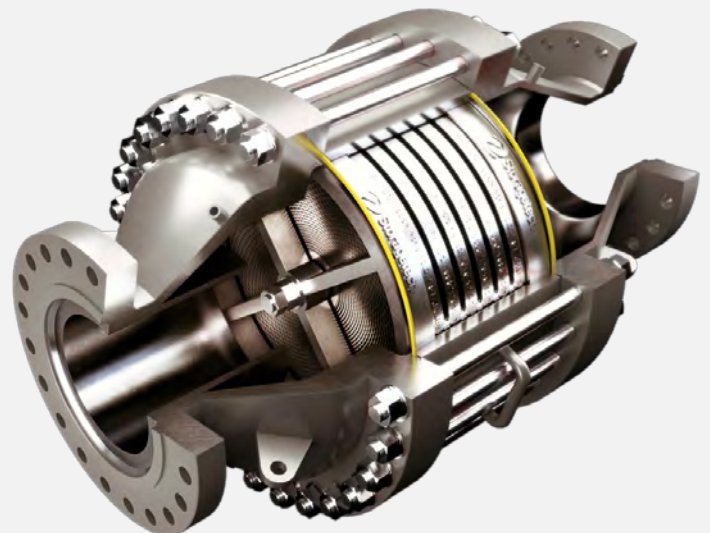
Flame Arrester (Vertical, In Line, Detonation)

Model 320

Storagetech™ Model 320 In-line Detonation Flame Arrester is designed for installation in gas pipelines.

Detonation occurs when a flame travelling through the pipeline reaches supersonic velocities, usually as a result of the pipeline conformation or pipeline surface roughness.

Changes in gas density and pressure causes the flame velocity to metamorphose from subsonic to supersonic.



Flame Arrester (Horizontal, In Line, Deflagration)

Model 301

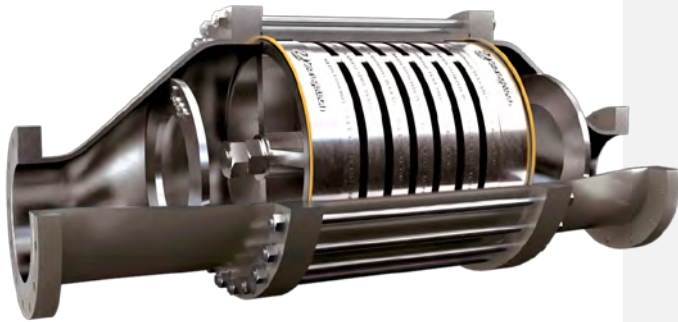
Model Number 301 In-Line Deflagration Flame Arrester is a safety device, designed to perform as a horizontal extinguishing barrier, which absorbs and dispels heat, reduces fire temperature and the oxygen level to stop the fire through layers of metal ribbons shaped with crimped corrugations. It is mounted horizontally between two lines. Special horizontal in-line design helps to maximize the flow capacity with minimum pressure drop. It is designed to withstand low to medium deflagrations. It is manufactured from steel or carbon steel, also special materials and coatings are available upon request.



Flame Arrester (Horizontal, In Line, Detonation)

Model 321

The flame quenching element is designed to be three or four times the area of the pipe in which it is installed, and is assembled between two flanged reducing spools. The element comprises a tightly rolled scroll or scrolls of crimped stainless steel ribbon to form passages through which the vapour passes. The area of each passage determines level of protection that the element provides. Storagetech™'s Model 321 In-line Detonation Flame Arrestor has a maximum experimental safe gap (MESG) as per the standard, and is suitable for gas groups IIB and IIA.



Flame Arrester (End of Line, Deflagration)

Model 310

Model Number 310 End-of-Line Deflagration Flame Arrester is a safety device, designed to perform as an extinguishing barrier, which absorbs and dispels heat, reduces fire temperature and the oxygen level to stop the fire through layers of metal ribbons shaped with crimped corrugations. End-of-Line Deflagration Flame Arrester is mounted at the end of a pipeline or at the end of a storage tank vent pipe, which enables tank venting and conflagration protection for vertical vent applications. It is designed to prevent outside particles such as dust, insects, water from accessing into the tank.



Flame Arrester (End of Line, With Automatic Opening Hood Deflagration)

Model 312

Storagetech™ Flame Arrestors (End-of-line, with Automatic Opening Hood) are passive devices that prevent the propagation of a flame or fire from entering into an opening in a pipeline or vessel discharging flammable vapor.

As different from model 310, Model 312 end of line flame arrester's weather hood is designed to react fire instantly tanks to it's fusible link, which is melted during the fire and let the weather hood release the gas/fire to the atmosphere.



Pressure Vacuum Relief Valves

Pressure Vacuum Relief Valve (End of Line, Weight Loaded)

Model 100

Model Number 100 Pressure Vacuum Relief Valve is a safety device designed to protect storage tanks or pressure vessels by releasing pressure directly to the atmosphere. The Pressure vacuum vent protects the storage tanks against excessive pressure or vacuum generated in the tank. The vent performs as an inhaler under pressure or as a discharger of overpressure. When air pressure exceeds the preset setting of pressure vacuum vent, the pallet opens, departs the seal, and expels any excessive negative or positive pressure. They are commonly mounted to a flange or pipe, which connects the vapor space of a storage tank. Dependent upon specific requirements, the vents can be applied to desired specifications allowing the pallet assemblies to open when specific pressure and vacuum levels are reached.



Other Available Models:

- Model 101:** Pressure Vacuum Relief Valve (End of Line , Spring Loaded)
- Model 110:** Pressure Vacuum Relief valve (End of Line, with humidity control)

Pressure Vacuum Relief Valve with Flame Arrestor (End of Line, Integrated Atmospheric Deflagration Proof)

Model 102

Model Number 102 Pressure Vacuum Relief Valve with Integral End-of-line Flame Arrestor performs a safety device designed to protect storage tanks against excessive pressure or vacuum provides total security of mind to operators of storage tanks. The Model 102 ensures protection against damage through over-pressurization, implosion due to vacuum conditions, and prevents any external flame entering the tank. The vent performs as an inhaler under pressure or as a discharger of overpressure. When air pressure exceeds the preset setting of pressure vacuum vent, the pallet opens, departs the seal, and expels any excessive negative or positive pressure. They are commonly mounted to a flange or pipe, which connects the vapor space of a storage tank. Dependent upon specific requirements, the vents can be applied to desired specifications allowing the pallet assemblies to open when specific pressure and vacuum levels are reached.

Other Available Models:

- Model 103:** Pressure Vacuum Relief Valve with Flame Arrestor (In Line, integrated, atmospheric deflagration proof)





Pressure Vacuum Relief Valve with Flame Arrester (End of line, Weight Loaded, Combination, Atmospheric Deflagration Proof)

Model 100 + 330

Model Number 330 Pressure Vacuum Relief Valve with Flame Arrester is combination of model 100 (end of line pressure vacuum relief valve) and 300 (in-line deflagration flame arrester) a safety device, which controls the internal pressure with a flame barrier and a pressure vacuum vent on top. The flame arrester performs as an extinguishing barrier, which absorbs and dispels heat, reduces fire temperature and the oxygen level to stop the fire through layers of metal ribbons shaped with crimped corrugations. The valves are mounted on the tank roof flange or a vent pipe from the vapor space. Dependent upon specific requirements, the vents can be applied to desired specifications allowing the pallet assemblies to open when specific pressure and vacuum levels are reached.

Other Available Models:

Model 101+300: Pressure Vacuum Relief Valve with Flame Arrester (End of line, spring loaded, combination, atmospheric deflagration proof)

Pressure Vacuum Relief Valve (Top Mounted, Pipe Away Type, Weight Loaded)

Model 120

Model Number 120 Top Mounted Pipe-Away Pressure Vacuum Relief Valve performs a safety device designed to protect storage tanks or low pressure vessels against excessive pressure or vacuum. Pipe-Away Pressure Vacuum vent collects toxic gasses in a separate container in application of piping away the hazardous gases rather than releasing them directly in to the atmosphere. When air pressure exceeds the present setting of pressure vacuum vent, the pallet opens, departs the seal, and expels any excessive negative or positive pressure. They are commonly mounted to a flange or pipe, which connects the vapor space of a storage tank. Dependent upon specific requirements, the vents can be applied to desired specifications allowing the pallet assemblies to open when specific vacuum level is reached.

Other Available Models:

Model 121: Pressure Vacuum Relief Valve (Top Mounted, Pipe Away Type, Spring Loaded)

Model 122: Pressure Vacuum Relief Valve (Side Mounted, Pipe Away Type, Weight Loaded)

Model 123: Pressure Vacuum Relief Valve (Side Mounted, Pipe Away Type, Spring Loaded)



Pressure Relief Valve (End of Line, Weight Loaded)

Model 140

Model Number 140 Pressure Relief Valve is a safety device, which eliminates the excessive pressure. Pressure Relief Vents comprise pallet assemblies, which stay closed under normal pressure. When preset excessive pressure is attained, the pallets lift, depart the seal and expel any excessive positive pressure. Pressure Relief Vents are commonly mounted to a flange or pipe, which connects the vapor space of a storage tank. Dependent upon specific requirements, vents can be applied to desired specifications allowing the pallet assemblies to open when specific pressure level is reached. This model does not provide vacuum relief.

Other Available Models:

Model 142: Pressure Relief Valve (Top Mounted, Pipe-Away, Spring Loaded)

Model 143: Pressure Relief Valve (End of Line, Spring Loaded)

Model 144: Pressure Relief Valve (Side Mounted, Weight Loaded)

Model 145: Pressure Relief Valve (Side Mounted, Spring Loaded)



Pressure Relief Valve (Top Mounted, Pipe-Away, Weight Loaded)

Model 141

Model Number 141 Pressure Relief Valve is a safety device, which eliminates the excessive pressure. Pipe-Away Pressure Relief Valve collects toxic gasses in a separate container in application of piping away the hazardous gases rather than releasing them directly in to the atmosphere.

Pipe-Away Pressure Relief Valve comprises pallet assemblies, which stay closed under normal pressure. When preset excessive pressure is attained, the pallets lift, depart the seal and expel any excessive positive pressure to a line.

Pressure Relief Valve are commonly mounted to a flange or pipe, which connects the vapor space of a storage tank. Dependent upon specific requirements, vents can be applied to desired specifications allowing the pallet assemblies to open when specific pressure level is reached.

This model does not provide vacuum relief.





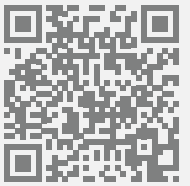
High Velocity Pressure Vacuum Relief Valve

Model 170

Model Number 170 High-Velocity Pressure Vacuum Valves are designed specifically for tough offshore conditions. Valve body and internals are made of completely stainless steel SS316 material that minimizes the corrosion effect.

Highly technical design helps smooth functioning during sailing. Specially designed loaded magnet keeps the set pressure at required setting and opens immediately releases the vapor high above the ship surface.

Jet releasing mechanism avoid any vapor collection on the surface of the ship and provide a safe operation. Åager Storage-tech™ High-Velocity PVV can safely operate up to -25°C and manual lifting handle help to break the ice on both pressure and vacuum sides .



Vacuum Relief Valve (End of Line, Weight Loaded)

Model 190

Model Number 190 Vacuum Relief Valve allows efficient airflow into liquid storage tanks when vapor space changes cause thermal contractions and the internal build-up vacuum exceeds the vent setting. Vacuum Relief Vents comprise pallet assemblies, which open, depart the seal and expel any excessive negative pressure, when air pressure exceeds the preset setting. They are commonly mounted to a flange or pipe, which connects the vapor space of a storage tank. Dependent upon specific requirements, the vents can be applied to desired specifications allowing the pallet assemblies to open when specific vacuum level is reached.

Other Available Models:

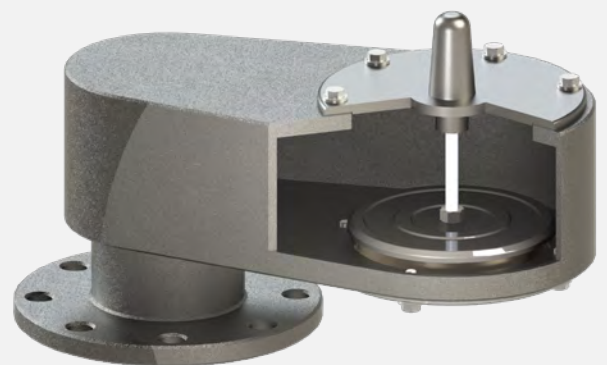
Model No 191: Vacuum Relief Valve (Top Mounted, Pipe-Away, Weight Loaded)

Model No 192: Vacuum Relief Valve (Top Mounted, Pipe-Away, Spring Loaded)

Model No 193: Vacuum Relief Valve (End of Line , Spring Loaded)

Model No 194: Vacuum Relief Valve (Side Mounted, Weight Loaded)

Model No 195: Vacuum Relief Valve (Side Mounted, Spring Loaded)



Pressure Vacuum Relief Valves

CO₂ Storage Tank Vent Absorber

Model 1200

Storagetech™ Model 1200 CO₂ Storage Tank Vent Absorber is Low-Pressure-Drop filtering product. Designed for liquids that interact with gases, dusts as well as particulates which takes into the storage tanks from atmosphere during emptying operation. The gas and particulate capturing methods are to determined product specific. In accordance with the needs determined for each liquid type, required analyses are carried out by our experienced engineering teams and the right product is offered for the desired system protection for your valuable systems. According to provided basic technical data and info such like, liquid type, operation temperature and pressure, total storage tank capacity, number of turnovers during year are enough to determine the product material, cartridge and filtration type as well as cartridge replacement time.



Storage Tank Vent Odour Filter

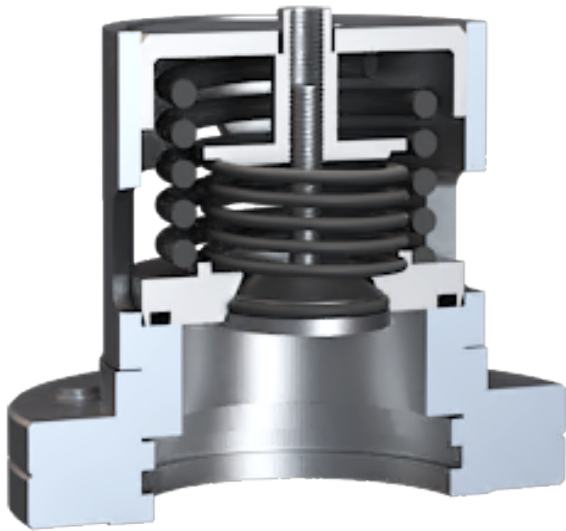
Model 1400

Storagetech™ Model 1400 Storage Tank Vent Odour Filter is offer a solution for your industrial environment with utilising special filtration systems for strong, nuisance odors due to evaporated gases.

Storagetech™ Storage Tank Vent Odour Filter is developed to absorb undesired odours from your zone continuously.

Also prevent extraction of harmful gasses to atmosphere during filling operations. Gas Absorbers is equipped with Low-Pressure-Drop MMHasso™ Filter cartridges. Replaceable MMHasso™ Filter cartridges contains cells and particulate filters. Storagetech™ offers a special filtration products according to your system requirements. The odour absorption filters is specially designed and manufactured depend on the stored medium, ambient condition, working pressure & temperature as well as the equipment size. Storagetech™

Storage Tank Vent Odour Filter filtering system provides %98-%99 efficiency for removing the off-odours from your industrial environment.



Pressure Vacuum Relief Valve Type ADR

ADR means, “European Agreement Concerning the International Carriage of Dangerous Goods by Road” and Storagetech designs special pressure vacuum relief valves according to that agreement.

Our first priority is always your safety and we are following related international standards.

Our ADR Type PVRV is designed for the vehicles and tanks that carries dangerous goods and the all possible scenarios are considered by our experienced design and engineering teams. They are used for the Group 3 liquids.



LPG & NH3 Pressure Relief Valve

LPG (Liquefied Petroleum Gas) and NH3 (ammonia) are the goods which might carry risks during transportation and storage.

Vapor that occurs during storage and transportations should be controlled carefully. That can be done with special pressure relief valves which are specialized for these gases.

Storagetech presents LPG & NH3 Type Pressure Relief Valves with its 40 years engineering expertise and industry know edge Your safety and system requirement is always our number one priority.



Free Vent Capped Type Model 150

Storagetech™ Model 150 Capped Free Vent is installed in low-pressure atmospheric storage tanks to meet free breathing requirements to prevent build-up of internal pressure.

The vent should be installed on the tank roof flange should be located at the center of the storagetank. It is supplied with weather hood and stainless mesh-screen protection.

A cap and screen protects the vent and restricts effects, dust, wind, rain, or insects from entering degrading the product. No routine maintenance is required to ensure continuous and effective operation.



Emergency Relief Valves & Gauge Hatches

Gooseneck Free Vent

Model 151

Model Number 151 Gooseneck Free Vent is the most economical type of free vent, which is generally used on non-evaporating liquid storage tanks. Free Vents allow efficient flow capacity to prevent the built up extreme internal (positive or negative) pressure by allowing atmospheres and vapors to flow freely in and out of tanks. They are designed to protect the breathing vents against outside particles such as dust, wind, rain, and insects. They are typically mounted to a flange or pipe, which connects the vapor space of a storage tank.



Gauge Hatch (Without lock)

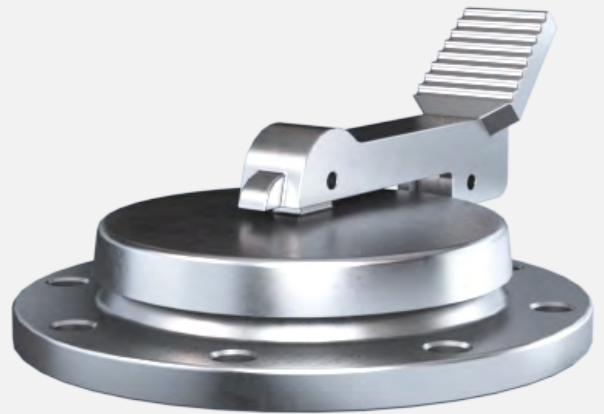
Model 200

Model No. 200 Storagetech™ Gauge Hatch offers a simple and easy access to the vapor space of bulk storage tanks. Opened by foot or knee, it leaves the operator hands-free to dip the tank's contents for depth, take product samples, and obtain temperature measurements. The Gauge Hatch is bolted to a tank roof flange. Thanks to its spark free design, offers safe operation.

Setting Range

Pressure: Weight-loaded up to 15 mbar

Ambient Temp: -20°C to +60°C



Gauge Hatch (With lock)

Model 210

Model No. 210 Storagetech™ Gauge Hatch is a safety device that has a cover structure that incorporates a pallet/diaphragm combination and that is cooperatively associated with a pressure responsive liquid seal sub-assembly. The lock system prevents unauthorized access to the storage tank. They are typically mounted to a flange, which connects the vapor space of a storage tank. Gauge hatches can be set to your specifications so that the pallet assemblies in the housings open when specific pressure and vacuum levels are reached.



Gauge Hatch /Slot Dipping Device (Non-atmospheric, sampling hatch)

Model 220

Äger Storagetech™'s Non-atmospheric Sampling Gauge Hatch provides access to bulk storage tanks while protection personnel and the environment when taking product samples, temperature, and gauging the depth product and residual water.

Designed specifically for use with volatile and hazardous liquids, the loss of liquid product and noxious vapour is minimised due to the construction of the hatch chamber.



Thief Hatch Model 230

Model Number 230 Storagetech™ Thief Hatch Spring Loaded is a safety device that has a cover structure that has pressure and vacuum relief mechanism housed inside the unit.

They are typically mounted to a flange, which connects the vapor space of a storage tank or pressure vessel.

Pressure vacuum spring loaded thief hatches can be set to your specifications so that the pallet assemblies in the housings open when specific pressure and vacuum levels are reached.

Setting Range

Pressure: Weight-loaded up to 15 mbar

Ambient Temp: -20°C to +60°C



Emergency Pressure Relief Valve (Weight Loaded)

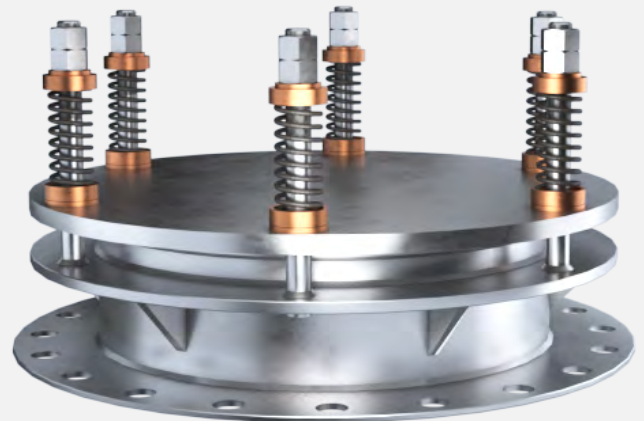
Model 400

Model Number 400 Emergency Pressure Relief Valve operates in the last resort when a vessel or storage tank is exposed to a large-scale fire, and the standard pressure relief valve has failed to open or cope with the extreme conditions. Designed to open in the event of high pressure, the set-pressure should be chosen to be above that of the pressure or pressure-vacuum relief valve. When the set-pressure is reached, the vent cover rises sufficiently to dissipate the pressure in the tank. The weight-loaded emergency pressure relief vent is installed in the horizontal plane on a flange at the top of the tank. A secondary use of the unit is to access the tank for product sampling or depth gauging.

Emergency Pressure Relief Valve (Spring Loaded)

Model 420

Model Number 420 Emergency Pressure Relief Valve is designed to operate in the last resort in the event that the conventional pressure-vacuum relief valve has failed to operate. The closure lid is retained in position by a calibrated coil spring. A build up of pressure in the tank will overcome the resistance of the spring and the weight of the closure cause it to open sufficiently to allow the internal pressure to dissipate, thereby preventing the risk of tank rupture or explosion. It will close automatically when the internal pressure is reduced.



Manhole Cover (Quick Opening Type)

Model 410

Model Number 410 Manhole Cover (Quick Opening Type) Storagetech™'s Manhole Cover has a variety of uses within the petro-chemical industry, farming, storage and general manufacture.

The Model 410 Manhole Cover is a flange-mounted unit that, as well as allowing the loading of powders, pellets and liquids, it provides access for cleaning the empty vessel. The hinged cover has a square seal, and is latched down with a locking-screw to prevent unauthorized access. It is installed in the vertical plane at the top of the vessels and storage tanks.



Internal Floating Roof & Seals

Internal Floating Roofs

Äger Storagetech™ brand is fully compatible with API 650 standards and provides various kinds of floating roof applications such as Full Contact Internal Floating Roofs, Pontoon Type Internal Floating Roofs and External Floating Roof equipment with safe and economical sealing systems to eliminate the evaporation losses.

Floating Roof Types:

Pontoon Type

Full Contact Panel Type

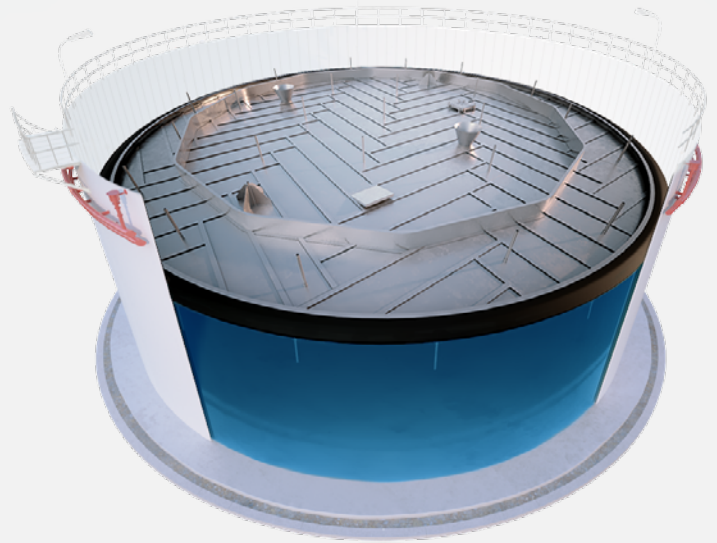
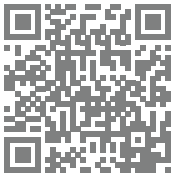
Full Contact Megafloat Block Panel Type



Full Contact Panel Type

Storagetech™ is a major supplier of full contact type internal floating roofs, which fully comply with API 650 standards. Full contact floating roofs are the most effective type of floating roofs in the market. Storagetech™ internal floating roofs, which minimize the evaporation losses of stored products, such as jet fuels, gasoline, diesel, and crude oil, can be supplied as aluminium or stainless steel. Beside, Storagetech™ floating roof's economic benefits, they also protect the environment by not releasing toxic gasses to the atmosphere. Storagetech™ comes with in-house manufactured floating roof seals.

In order to minimize the gap between the full contact panel type floating ceiling tank and the product, foam support is provided between the polarized material and the panel. Extra closure is applied to completely close the gaps on the pan. The panel is designed not to sink completely.

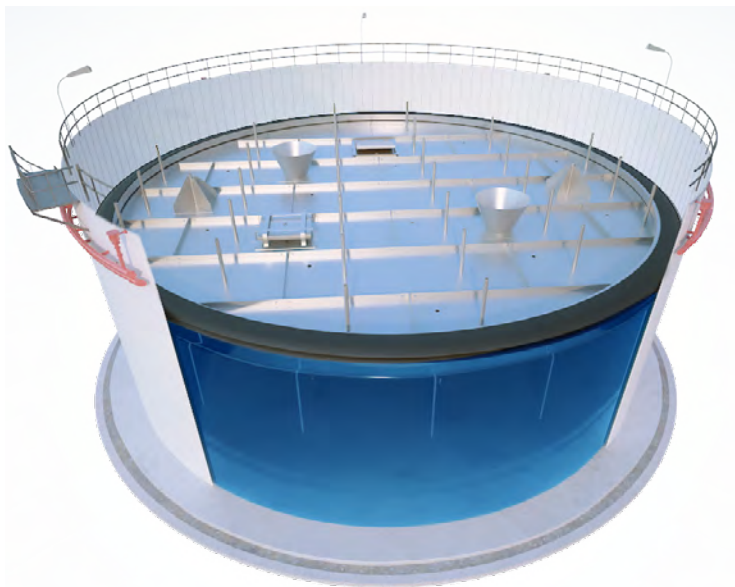


Full Contact Megafloat Block Panel Type

Storagetech™ MegaFloat Block Panel Type Internal Floating Roof (IFR) is manufactured to be installed inside fixed roof storage tanks, it's a Full Contact Floating Roof with absolutely no gap, thereby reducing emission and restricting vapor build up.

The differentiating factor between MegaFloat and the other Internal Floating Roof is the space, often there is vapor space between the roof and the product which allows dangerous fumes to collect.

MegaFloat is designed to be much more reliable than other available Internal Floating Roofs.

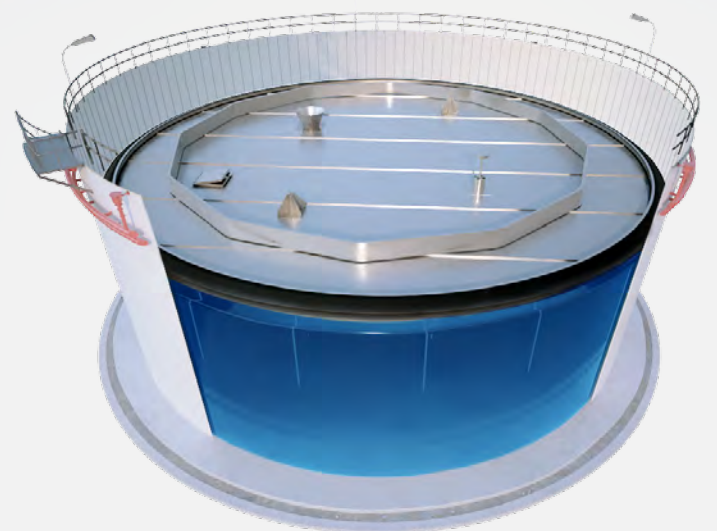


Pantoon Type

Storagetech™ is a major supplier of pantoon type internal floating roofs, which fully comply with API 650 standards. Pantoon type floating roofs are the most economical type of floating roofs in the market.

ERGIL Storagetech™ internal floating roofs, which minimize the evaporation losses of stored products, such as jet fuels, gasoline, diesel, and crude oil, can be supplied as aluminium or stainless steel.

Beside, ERGIL Storagetech™ floating roof's economic benefits, they also protect the environment by not releasing toxic gasses to the atmosphere. ERGIL Storagetech™ comes with in-house manufactured floating roof seals.



External & Internal Floating Roof Seals

External - Internal Floating Roof Seals Type

Mechanical Seals

Pantograph Type

Thanks to the pressure applied by the weights, the pressure on the top and bottom of the mechanical seal is maximized.

Pantograph type mechanical seal is a mechanical seal system used for both inner floating roof and outer floating roof in storage tanks which storage tanks service create a corrosive effect and evaporation. With the secondary seal option which called compression plate, it provides an extra sealing and prevents evaporation losses to almost %99. There are material options such as Carbon Steel, Stainless Steel SS304, Stainless Steel 316 for the Pantograph Type mechanical seal. The most important issue that affects the performance of the sealing system is that the load which is applied on to the shoe seals needs to be balanced and this force covers all openings through rim. Effective seal performance can cover openings up to 200 mm. and it can work with ± 100 mm tolerance.

Other Available Models:

Primary Seal

Primary + Secondary Seal



Scissor Type

The most important case in the usage of this type sealing is to increase the material strength by reducing the weight and to ensure the sealing of, especially light and corrosive storage products.

ERGIL StorageTech™ recommends the use of Scissor type sealing in the lie of pantograph seal in order to balance price/performance ratio for extreme corrosive volatile or light storage products.

Effective seal performance can cover opening up to 200 mm. And it can work out with ± 100 mm tolerance. Thanks to its superior spring system, it successfully meets 300 mm rim width and works effectively maximum ± 100 mm tolerance in rang.

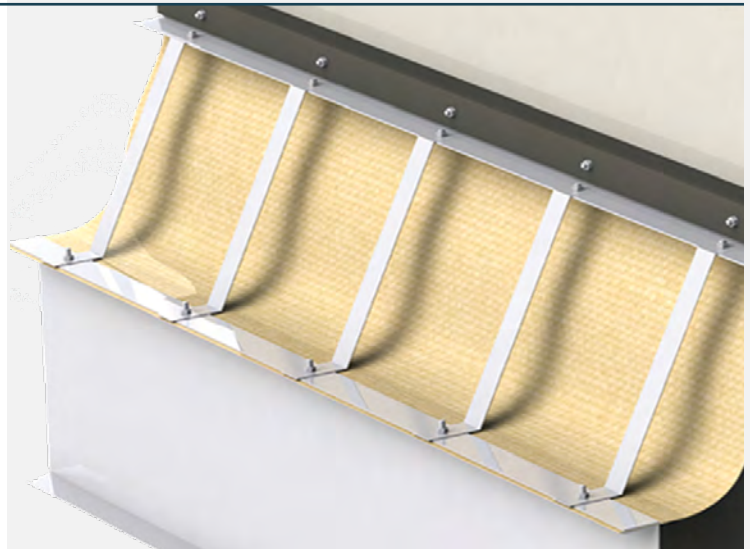
Other Available Models:

Primary Seal

Primary + Secondary Seal

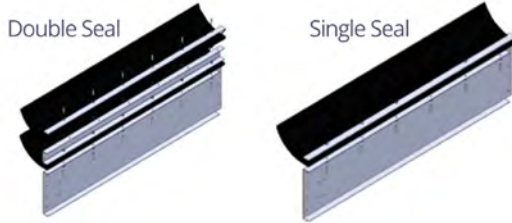
Spring Type Mechanical Seal

Satisfactory compression force for double lip wiper seal is ensured by the use of the rim pressure spring which has to be taken advantage of when the use of compression plate is not recommended for in-tank systems. The system provides more flexible operation by obtaining the gain from the material and total weight. Installation and maintenance on this side is facilitated because it can be erected on a part-by-part basis. The assembly is carried as seperately and then outside and only the springs connected to the bolts provide the desired pressure force most actively. With the usage of the Teflon fabric, all corrosive media are trapped in the vapor area and the corrosive effects are achieved at the lowest level due to the material being used at the bottom.



Wiper Seals

Double Seal & Single Seal



Äger Storagetech™ Wiper Seals is one of the most economical and effective types of rim seal available in the market with tremendous gap sealing ability, maintenance free operation and long service.

It is designed to fit specific tank round anomalies and allows for in-service installation.

Single & Double Joint Floating Suction Unit

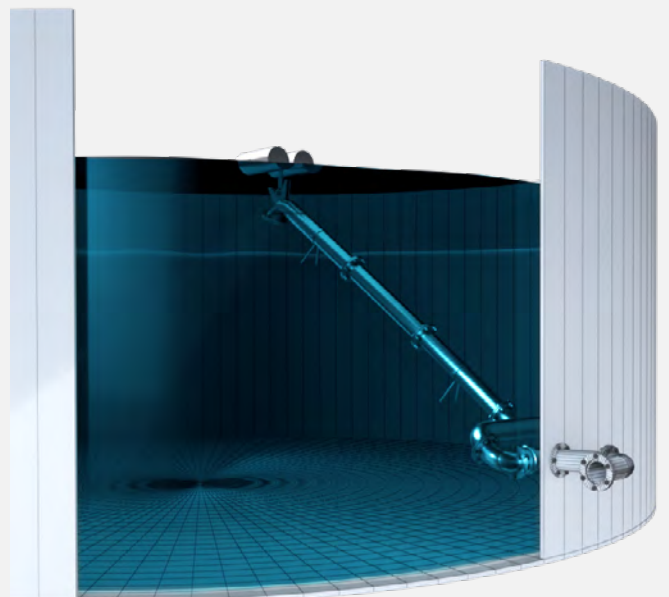
Model 700

Model Number 700 Floating Suction Unit is designed to deliver uncontaminated and sediment free liquid by absorbing the fluid closest to the surface regardless of the surface level.

It reduces the time required for extra filtering of the product.

This application is highly used in the storage of aircraft, motor fueling, heating oils and petrochemicals.

Storagetech™ provides unique and economical solutions including single and double joint suction systems.



Swivel Joint Series Model SWV-1

Model SWV-1 Swivel Joint is designed for especially storage tank internal equipment such as floating suction units, drain systems, and oil skimmers; however different model are available for various applications.

SWV-1 swivel joints are available in carbon steel, stainless steel and aluminum. Sizes are ranging from 2" to 40". SWV-1 usually sealed with PTFE, but can be modified as per the application and products stores.

Roof Drain System

Model 800

Model Number 800 Storage Tank Roof Drain System is mainly used to drain unwanted rainwater off external floating roof storage tanks. Flexible and swivel joints are available as per customer design.

Oil Skimmer

Model 1100

Model Number 1100 Oil Skimmer is a compact easy to use self-adjusting floating oil skimmer for daily and emergency use to clean undesirable oil, filth and dirt. Thanks to its effective design, it is one of the best methods of cleaning the scum. It is the most secure way to operate compared to other methods, such as hand held vacuums, blankets. StorageTech™ Oil Skimmers can be used for open water, such as lakes, as well as storage tanks and silos.

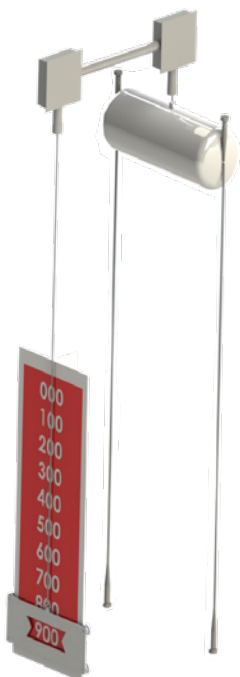
Pivot Master Series

Model PM-1

Model PM-1 Pivot Master can be used for petroleum, chemical and petrochemical products. Flexible composite hose material provides ultimate resistance to aggressive media. Stainless steel layer provides extra strength against pressure. PM-1 pivot master is cover with stainless steel plates, which protects against any damages, from both sides.

An Äger brand Storagetech™ designs and manufactures most complicated floating suction, oil skimmer, and drain systems for various kind of applications, including fuel oil, crude oil, chemicals, sewage and drain waters.

Unique swivel joint design helps you to achieve most durable operations and minimize maintenance time. All the moving and welded parts tested and inspected by in house quality control team in multiple stages. As a ASME U stamp company, Storagetech™ provides best welding quality in the market.



Tank Liquid Level Indicator

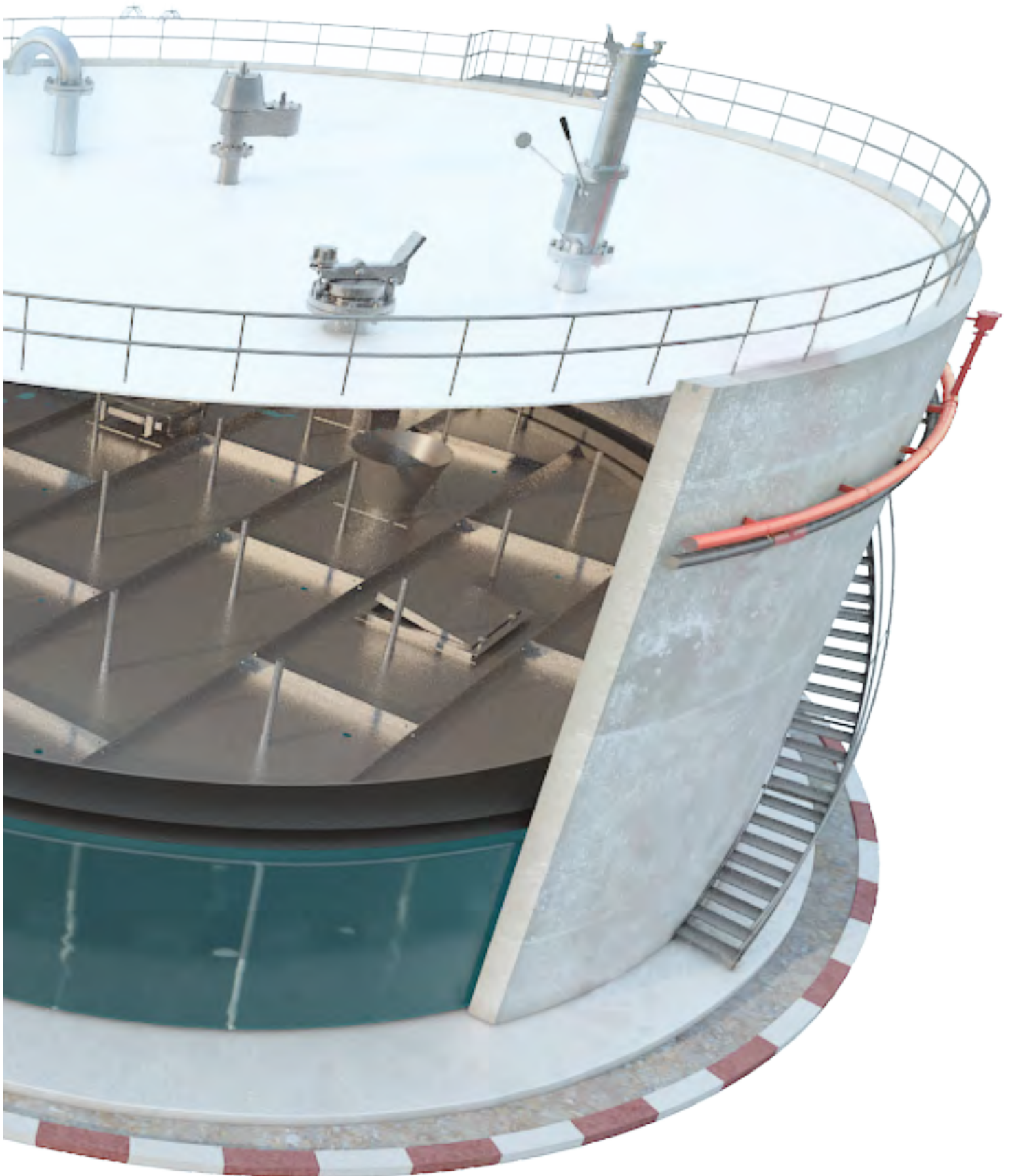
Model 600

Model number 600 is a simple and durable mechanical leveling system that can be used for almost any kind of liquids.

This type of level gauging system is easy to use and does not require special knowledge to meter the liquid.

It can be installed on above ground and underground storage tanks.

Storagetech™ also provides limit switches to actuate high and low level alarms and other signaling functions.



Storage Tanks Aluminum Dome Roof

As an Äger brand, Storagetech designed with its 40 years of experience, aluminum domeroofs for services, innovative solutions, and a wealth of industry experience combined to provide the total package for your aluminum cover requirements.

It is designed as self-supporting and represents the pinnacle of precision-designed aluminum covers. The lightweight construction allows covering large-diameter tanks without intermediate support. The material quality offers excellent resistance to atmospheric corrosion (e.g. industrial reservoirs or seaside facilities), is virtually maintenance-free, and is designed for extended service life.

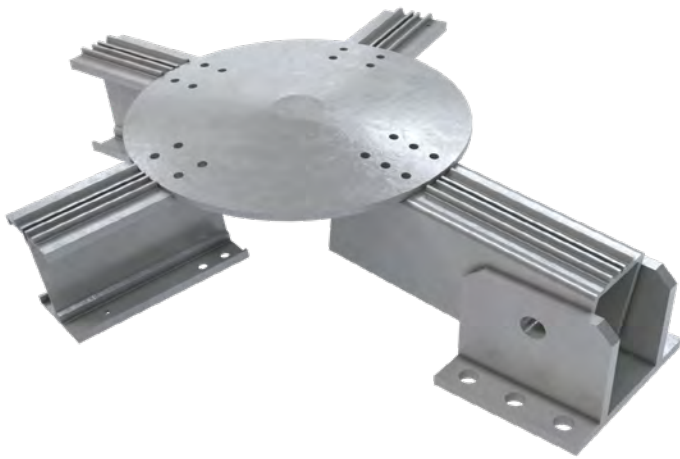


Our Differences

Superior Engineering: Storagetech uses the latest engineering structural analysis software, 3D CAD design software, and structural design of steel connections as compared to traditional outdated calculation methods.

Designs for Regional Parameters: Storagetech design its domeroofs as per regional environmental, and seismic parameters with keeping regulations in mind.

The Safety Solution: Storagetech considers high-risk factors in our calculation and provides the safest profile design as per international standards.



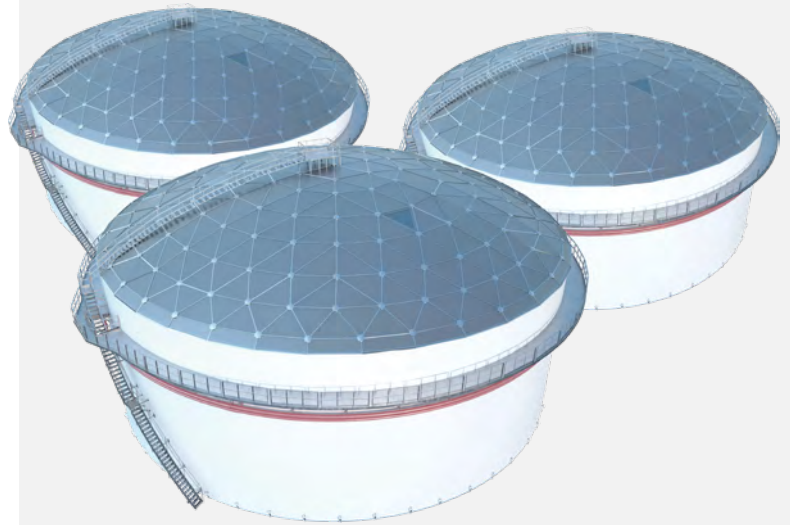
Advanced technology for secure seal exceptional performance for water, chemicals, and hydrocarbons



Internal Pressure: The domeroofs are designed to consider the customer's storage tank's internal pressure and offer tailor-made solutions to fully meet the requirements.

Compatibility: Whether it is an existing tank or a new tank, Storagetech's design provides custom solutions considering the tank design and local requirements.

Experience in Installation: Storagetech guarantees the availability of an experienced site installation team or supervisor as per customers' requirements.



Water Tightness: The design guaranteed absolute zero leakage. It avoids water penetration, deterioration, and water intrusion.

Tailor-Made Profiles: The usage profiles are designed as per higher risk factors and avoid using lighter non-compliance profiles.

Choosing the Right Bolts: Storagetech always recommends using lock bolts to increase the profile connection stability.

Choosing the Right Seal: Storagetech always recommends using wiping seals to avoid leakage and increase the lifetime cycle.





Storagetech™ Fire Fighting Equipment

Foam Top Pourer (Foam Chamber)

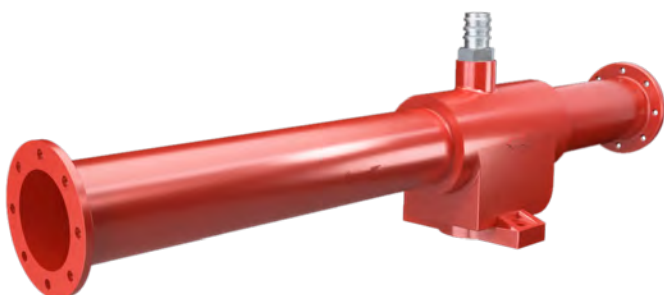
Model 1020

Model Number 1020 Storagetech Top Pourer Set is designed for storage tanks for fire fighting. It is designed for protecting fixed-roof (cone) and internal floating roof storage tanks. Foam Chamber is designed to introduce expanded foam directly onto the surface of a flammable or combustible liquid for fire extinguishing and/or vapor suppression. It comprises a foam generator, a foam pourer, and a vapor seal (to prevent the escape of product vapors to atmosphere through the foam line) all combined into a single fully integrated unit. Classified as a Type II discharge device in accordance with NFPA Standard 11, foam chambers deliver low expansion foam directly onto the fuel surface with a minimum of foam submergence and fuel agitation.

Rim Seal Foam Pourer (RSFP)

Model 1021

Model Number 1021 Storagetech™ Rim Seal Foam Pourer (RSFP) is designed to prevent any potential risk for fire and vapor suppression for external floating roof storage tanks with its optimized and unique engineering capability. The RSFP allows the system discharging fully aspirated foam directly to the annular seal area of the open top floating roof storage tanks.



Foam Mixer (Inline Inductor)

Model 1030

Model Number 1030 Storagetech™ Inline Foam Inductor provides a simple cost effective means of introducing foam concentrates into the water stream. It is used for plant fire fighting systems as a foam proportioner.



Foam & Water Cooling Sprinklers

Model 1040

A fire sprinkler is the part of a fire sprinkler system that discharges water or foam when the effects of a fire have been detected, such as when a predetermined temperature has been reached.

Model Number 1040 Storagetech™ Foam Sprinklers are designed for firefighting for water and foam applications. Storagetech™ follows fire sprinkler application and installation guidelines, and overall fire sprinkler system design guidelines, are provided by the National Fire Protection Association (NFPA) 13, (NFPA) 13D, and (NFPA) 13R.

Other Available Models:

Model 1041: Cooling Sprinklers

Mobile Foam Monitor Trailers

Model 1050

Model Number 1050 Storagetech™ Foam Trailers are designed to launch foam above storage tanks. Storagetech™ monitor trailers can be used in the first place to back up fixed firefighting systems on oil storage tanks, and in many cases used and applied as the first intervention against the fire where fixed systems have failed, or were not available. It can be used as mobile or stationary. It has two nozzles, one of the nozzles if for water, the other one to launch the foam. The nozzles are made of aluminum and are resistant to corrosion. It has a manometer to indicate the flow pressure. Foam tank can be supplied with foam bladder or without bladder.



Foam Bladder Tank

Model 1060

Model Number 1060 Storagetech™ Foam Tank is a steel pressure vessel, which is designed as per NFPA FIRE CODE NO: 11 LOW EXPANSION FOAM SYSTEM STANDARDS. The material is chosen as per ASME Sec. VIII div.1. This steel pressure vessel stores a foam concentrate contained within an elastomeric bladder. Water pressure helps to supply concentrate pressurized and proportional foam. Storagetech™ foam tanks can be manufactured as the vertical and horizontal type in various capacities. Foam tanks without bladders are also available. Foam tank can be supplied with foam bladder or without bladder.

Äger GmbH

Germany Head Office + R&D + Sales

Herzogspitalstraße 24
Munich 80331
Germany
+49 (0) 89 1250 15240
www.aager.de
sales@aager.de

Turkey Head Office + Sales

Ağaoğlu My Office 212
No: 3 B Blok /175
P.K 34218 Güneşli – Bağcılar
Istanbul / Turkey
+90 212 485 40 07
+90 212 485 40 42
www.ergil.com
sales@ergil.com

Turkey Factory + Engineering + R&D + Sales

Mersin Tarsus OSB.13.CD.NO:7
P.K: 33540 Mersin, Turkey
+90 324 676 44 04
+90 324 676 44 03
sales@ergil.com

U.A.E. Sales + Warehouse

Jumeirah Lake Towers, X2 Tower 1906
P.O. Box: 123661 Dubai, U.A.E.
+971 4 450 8051
+971 4 450 8041
sales@ergil.com

catalog series

Storagetech™

Revision No: 10
ST-CT-03.23/V10
storagetech.de

March 2023

Storagetech™ Website
QR Code

